

[CAD Detailing and Analysis]

[Industrial Design]

[Product Development]

[Cad Rendering]

MONARCH ADROIT INFOTECH PVT. LTD.

[3 D Cad Conversion]

[Reverse Engineering]

[Product Design Support]

[Research and Innovation]

MONARCH ADROIT INFOTECH PVT. LTD.

Incepted in 2007 providing only CAD/CAM services.

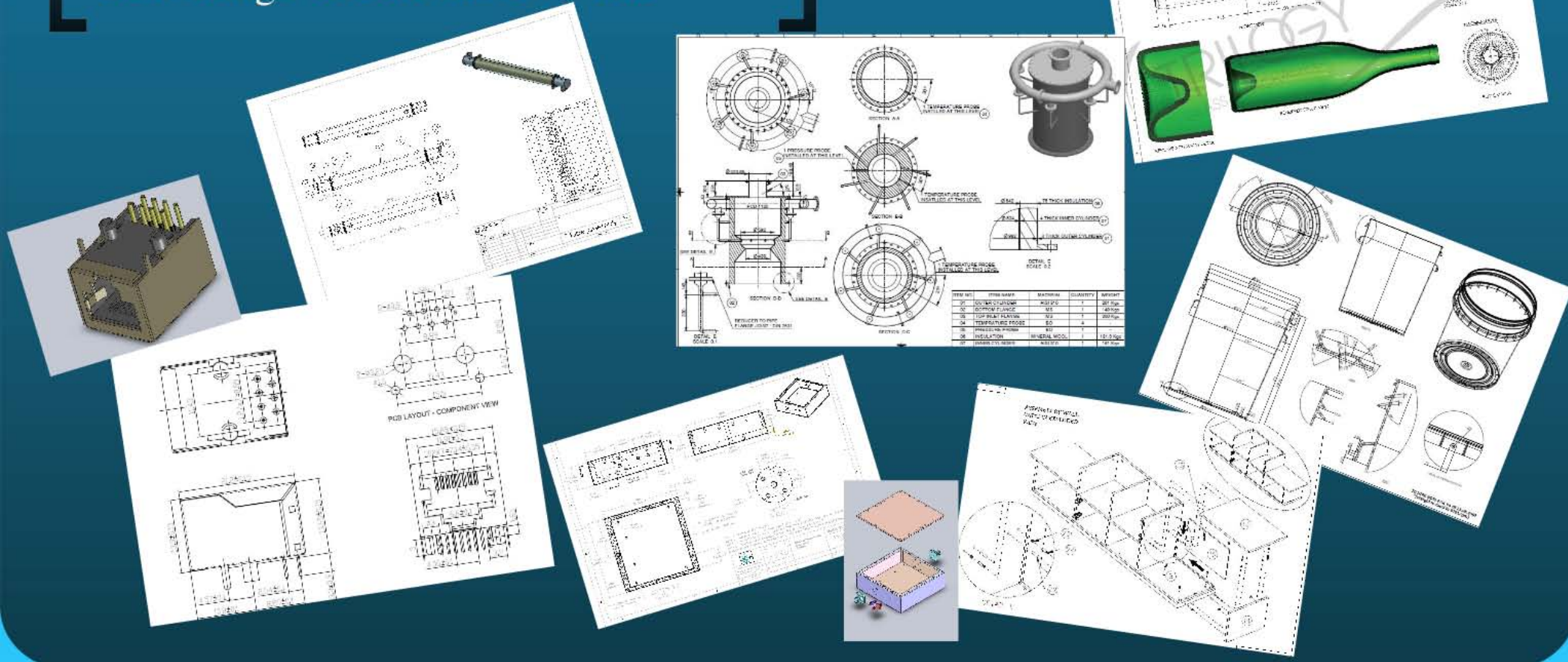
Today the company has ventured into different phases of product development, engineering and research providing support and enriching the client's business .



[Work at a Glance]

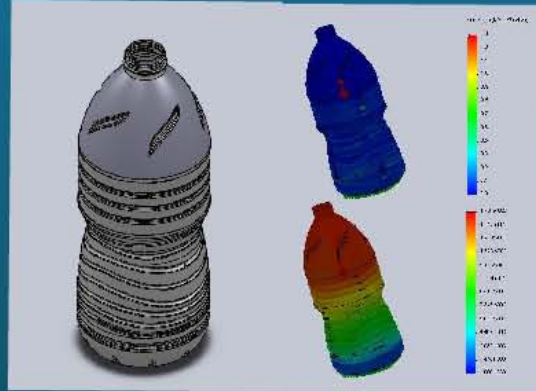
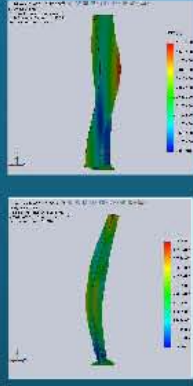
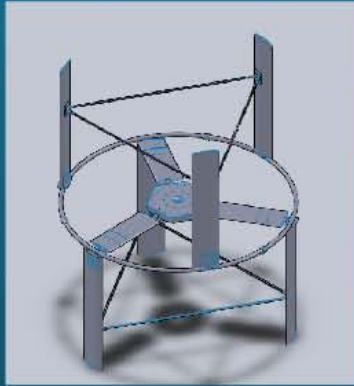
CAD Conversion

Delivering Perfection... On Time

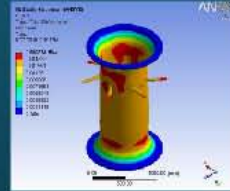
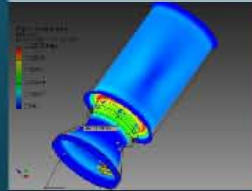


CAD Detailing and Analysis

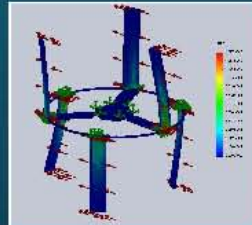
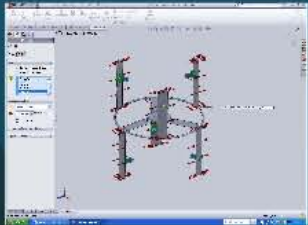
Expert Analysis from the experts



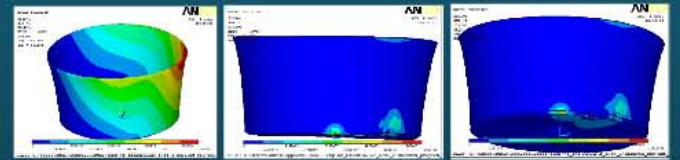
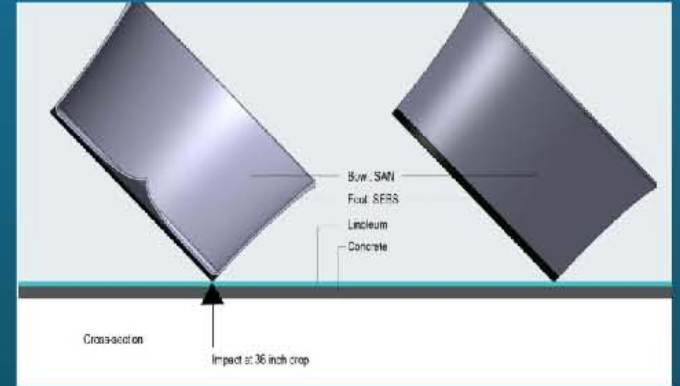
Linear and Non-Linear Stress Analysis for PET



Mechanical and Thermal Analysis for a Assembled Cylinder



Finite Element and Model Analysis for Vertical Axis Wind Turbine



Drop Test Analysis for Bowl

Reverse Engineering

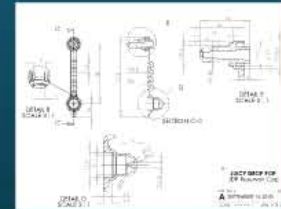
Product Development Simplified.....



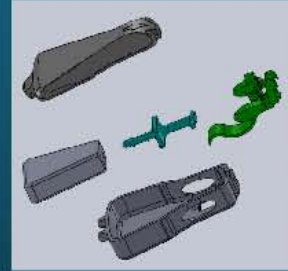
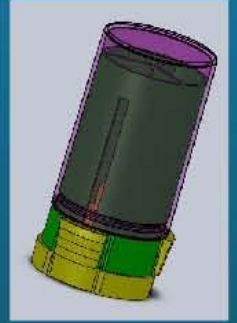
Reverse Engineering from Physical Model



Physical Model to Point Cloud Data to Precision Class A Surfaces

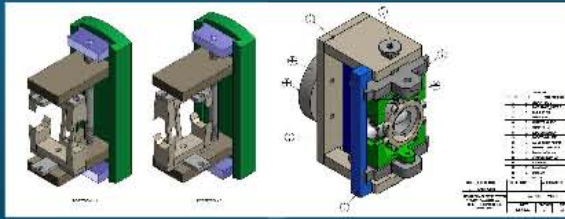


Detailed Modeling from Product Images

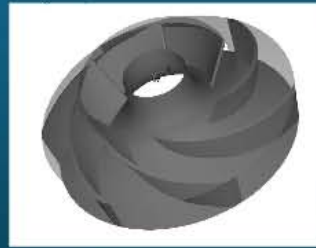


Research and Product Development

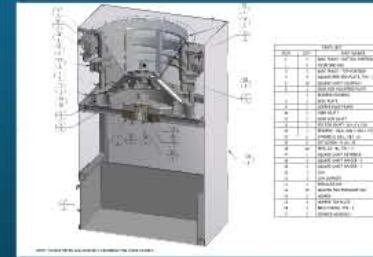
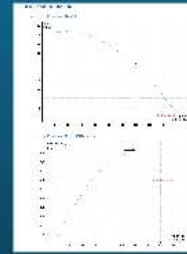
Core Competence.....



Fixture Design for a prominent industrial firm from concept to manufacturing...



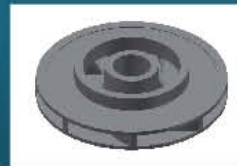
Impeller Design with improvised efficiency and performance R & D project for a SME



Problem Solving for a Complex Base Plate Assembly

Research and Product Development

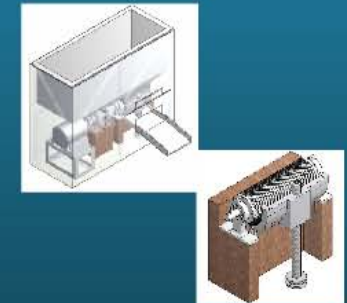
Core Competence.....



Tool and Die Design of Impeller
Parametric Modelling with Excel Interface
saving time and increasing flexibility for the client



Manufacturing Support for Product Development



Complete Product Development from
Concept level to Manufacturing for an
NGO

Industrial Design

Where Art meets Engineering.....



Surface Modeling in Rhino

Styling Concept

Keywords - **Sturdiness, Confidence** and **Aggression** to define a powerful character

Inspiration

Human expressions considering the aspects of emotional design and hence it is easy for the user to connect and relate to the product.



Styling Concept for a major Automotive Brand for 2025

Preference to "TATA" logo to create a brand identity. Newspaper stand to increase utility. Inspirational quote with a modification to change it fully. Reimagined from the curve on TATA symbol and the bold tradition of roundness. Box to insert letters related to "concern" in office.



Product in context

Design Brief:

To design a **Concern Box** for the offices of TATA power which has functional, emotional and aesthetic values giving prime importance to Brand "TATA".

"**Concern Box**" is a concept where any employee from the firm can speak up for any immoral happening. The current form was not appealing and hence the design issue with the company was to redesign the current box combining the utility and aesthetic value.

Design has been selected by the management for further development.



Designing of a Concern Box for TATA Power

Industrial Design Projects
Successfully Executed for Lumium
Innovations and Dhama
Innovations

Project Work cannot be disclosed
due to Confidentiality
Agreement

Renderings And Animation

Realistic..to feel the true essence



Constructive Minds Bonded by
Values, Commitment and
Excellence....